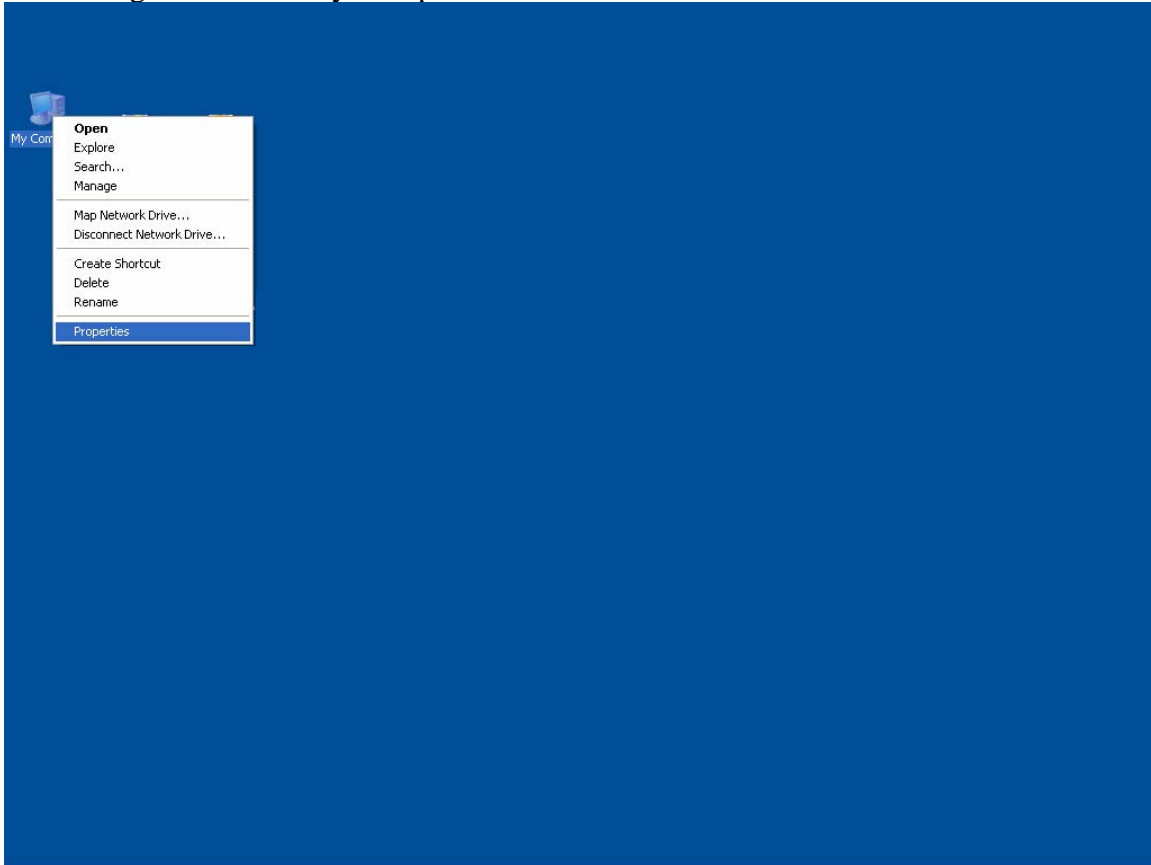


How to setup Imagem to run from a Windows XP Shortcut:

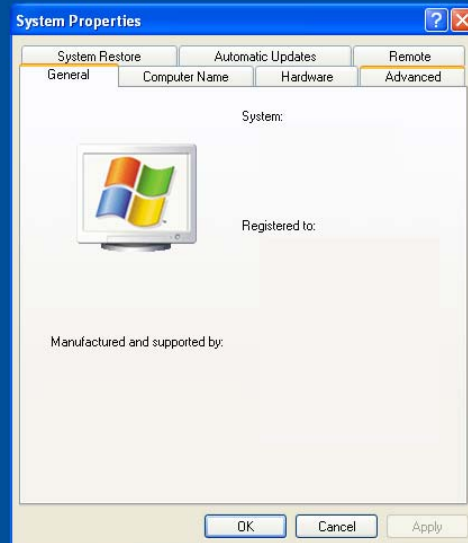
First, you have to setup two environment variables in Windows XP:

1. Right click on “My Computer.”

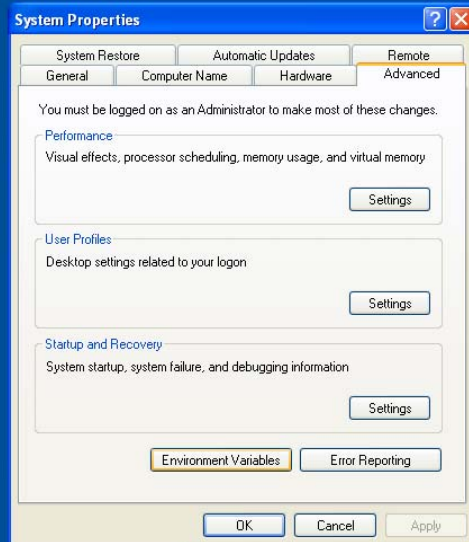


2. Select “Properties”.

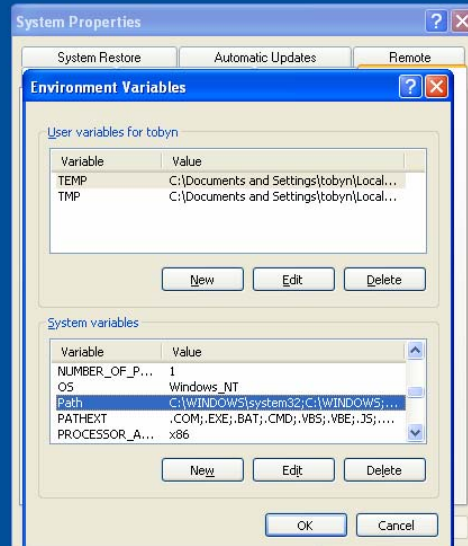
3. Click the “Advanced” tab.



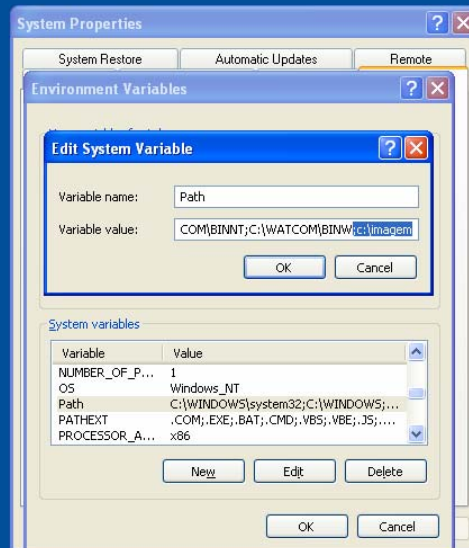
4. In the “Advanced” tab, select “Environment variables”.



5. Find the “Path” variable, and click “Edit”.

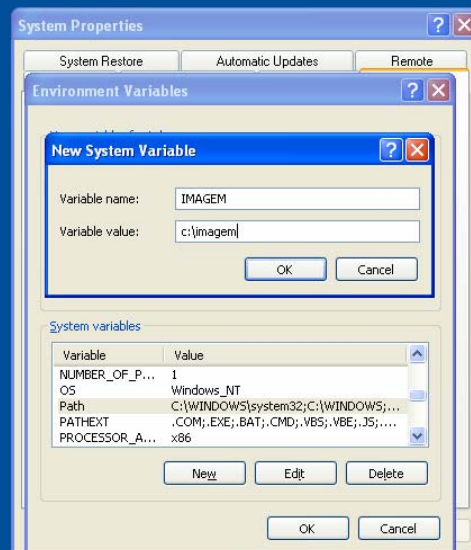


6. In the “Variable value” field, enter “;c:\imagem”. If you put imagem onto a different drive or directory, replace “c:\imagem” with your path. E.g, if you put imagem onto your D drive in the “Stratagem” directory, you would put “;d:\stratagem”.



7. Click “Ok”.
8. Click “New”.

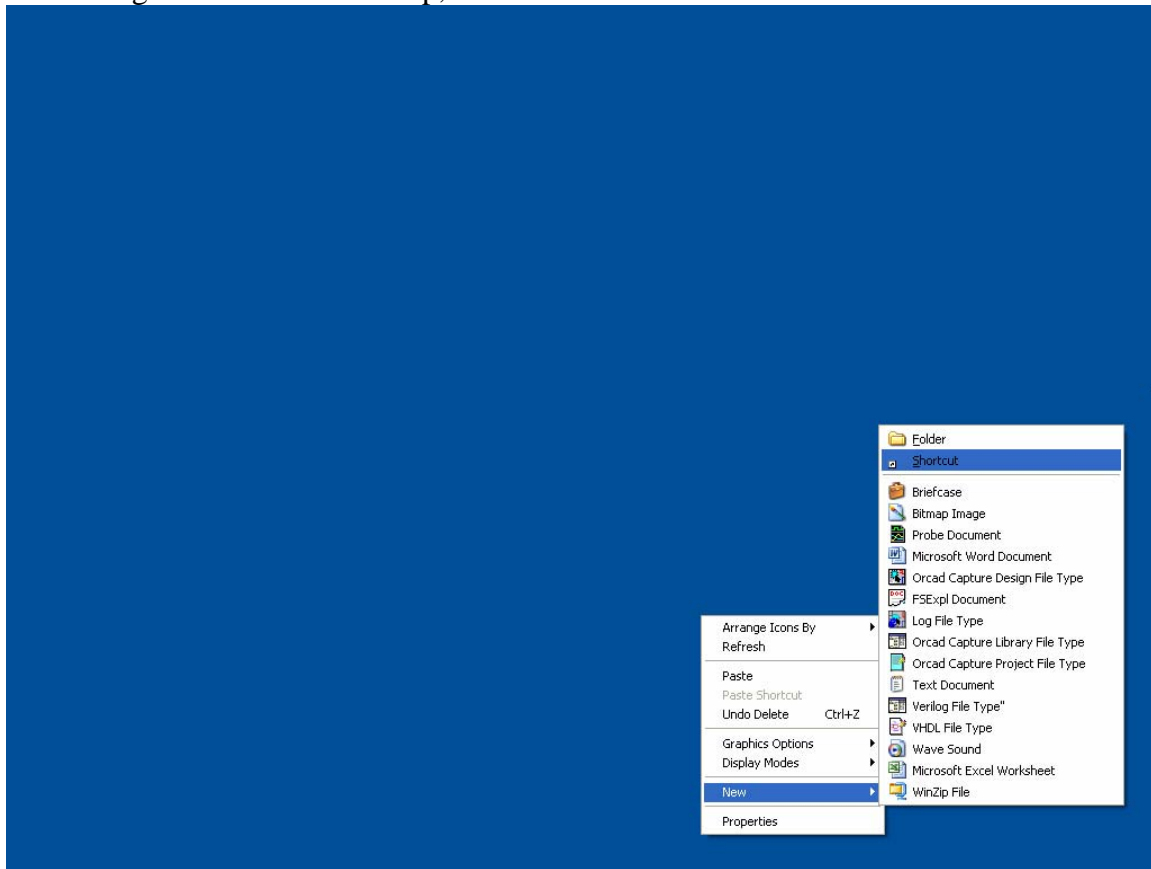
9. In the variable name field, enter “IMAGEM”. In the variable value field, enter “c:\imagem”. Again, if you put Imagem into a different drive or directory, put that instead. E.g. if you put Imagem on your D drive in the Stratagem directory, put “d:\stratagem”.



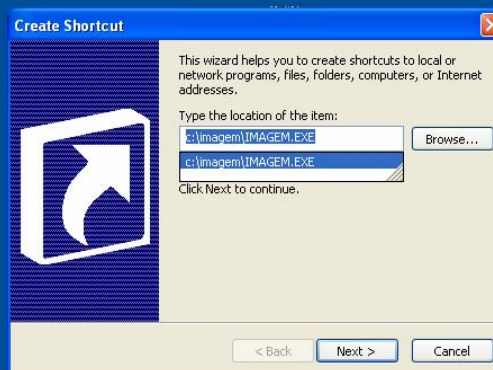
10. Click “Ok”.
11. Exit out of system properties by clicking “Ok”.

Now, we need to create a short-cut to run Imagem:

1. Right click on the desktop, and select “New” and then select “shortcut”.



2. Type “c:\imagem\imagem.exe” into the location field or browse to find “imagem.exe”. It should be located within the imagem directory. In my example above, it would be located at “d:\stratagem\imagem.exe”.

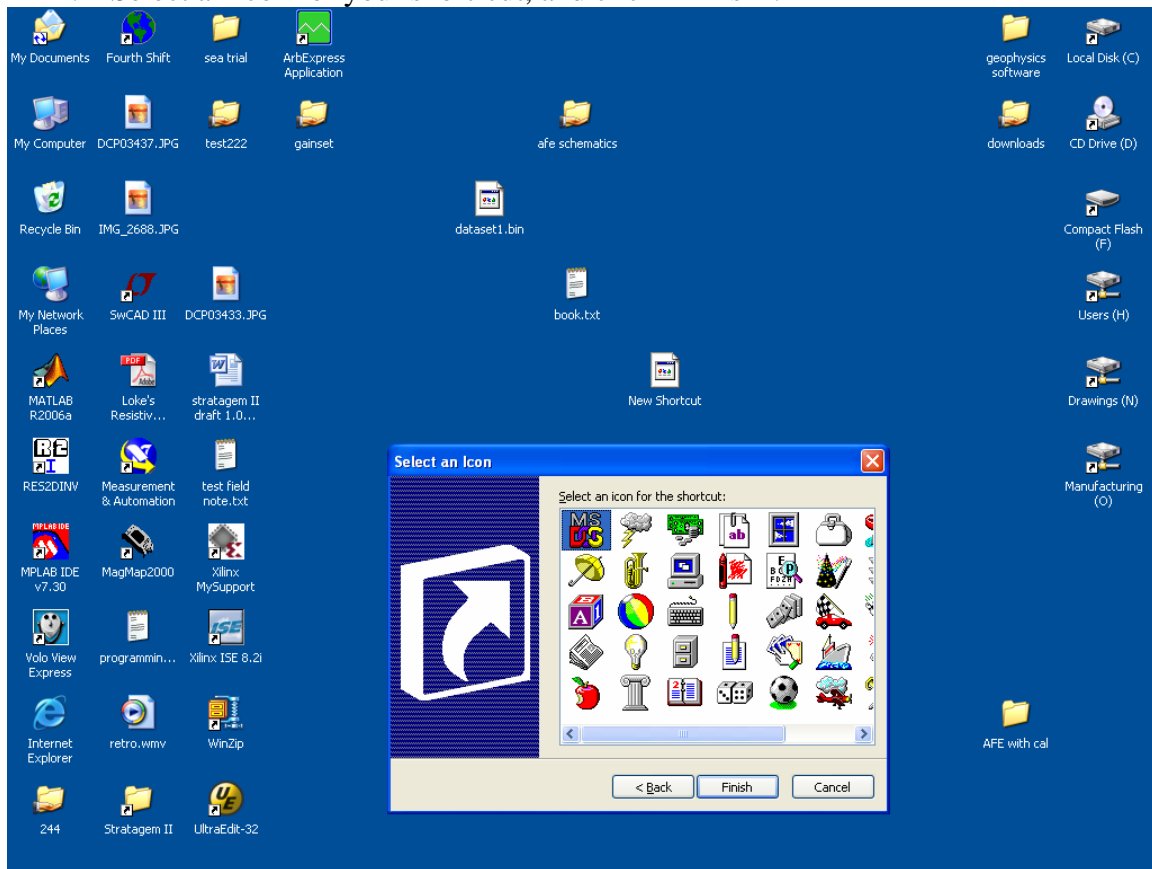




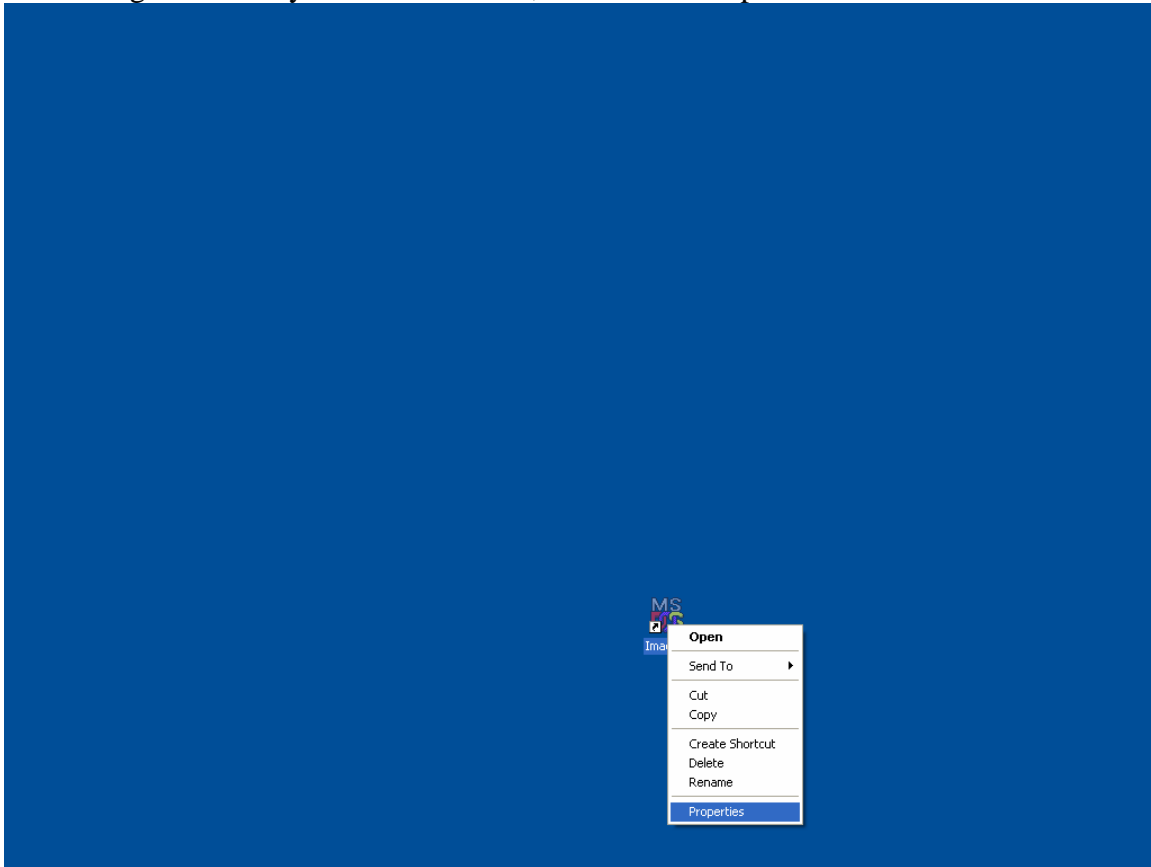
3. Name your short-cut.



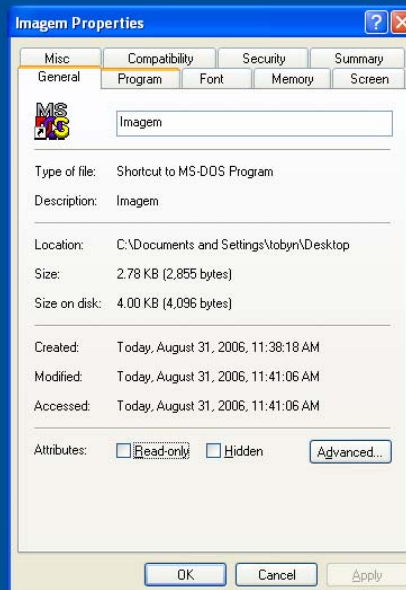
4. Select an icon for your short-cut, and click “Finish”.



5. Right click on your new short-cut, and select “Properties”.



6. Click the “Program” tab.



7. In the “cmd line” field, add “ c” to the “c:\imagem\imagem.exe”. This will tell Imagem to run in color.



8. In the “working” field, input your survey directory. In my example, my survey is on the C drive in the “survey” directory.



9. Click “Ok”.

Now, you can run imagem by double-clicking on the short-cut. If you want to load a different survey, you can either make a copy of the short-cut and modify the “working” field of the short-cut copy (step 9) or you can simply modify the “working” field (step 9) of your original short-cut.

Please note that you only need to setup the environment variables once on any given system.