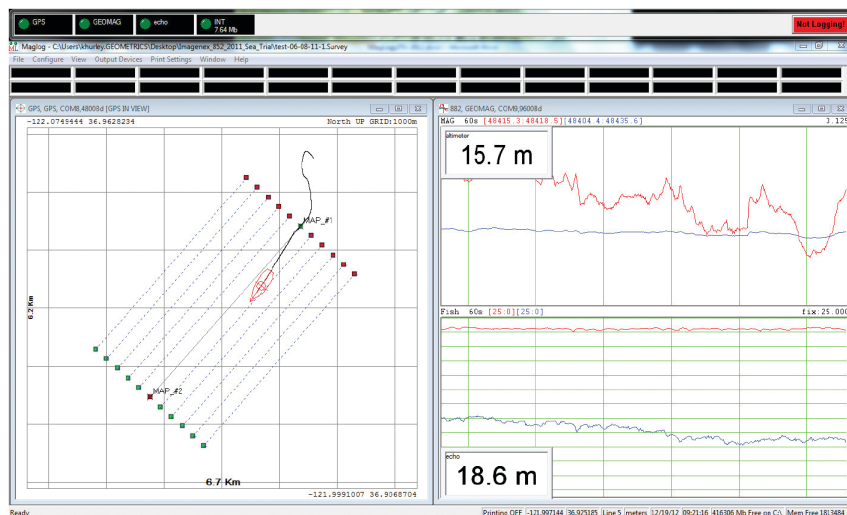


MagLog™

Data Logger & System Controller



MagLog™ Multi-Paned Window Format to Display Data from Multiple Sensor Instruments.

MagLog™ offers the marine or airborne survey operator an easy to use yet sophisticated data logging and display controller. This software program boasts superior data handling capabilities for logging, displaying and printing multi-channel asynchronous data transmissions. Single sensor or multi-sensor gradiometer arrays with depth, altitude and/or differential GPS track on map overlays are easily configured for storing to disk, display and printing using the step-by-step Configuration Wizard.

A special GPS window is included which shows the real-time fish position with complete zoom controls and plot of survey track. All position plots are available for output to a PDF file for real-time or post survey hard copy. Digital data is logged to disk and time stamped to an accuracy of 10 milliseconds. MagLog interpolates the position of each sensor relative to GPS positions, converts to UTM coordinates, if required, and exports an X, Y, Z or Latitude-Longitude-Magnetometer data file for additional processing and analysis. Go-No-Go warning lights at the top of the display alert the operator to any errors or data conditions which exceed user preset min/max levels or noise components.

MagLog™ is offered in a Lite or Pro version

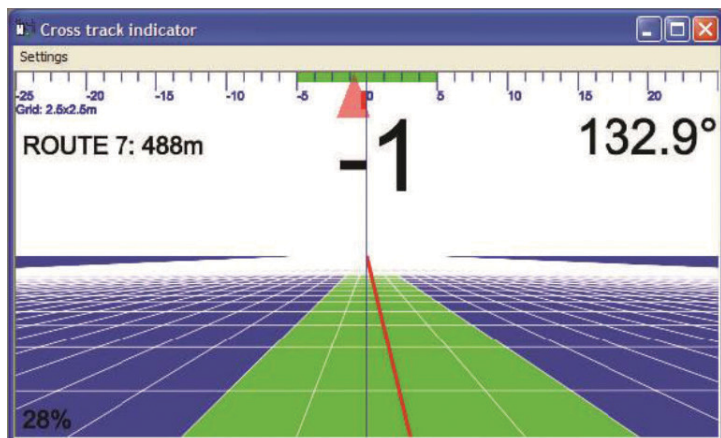
MagLogPro maintains all of the same features as Lite, but also accommodates special transmission formats such as TCP/IP Ethernet Logging, allows data recording from a cable counter, and logs EM 61 data.

FEATURES

- **Runs on Windows XP, 7, 8 and Newer** - Multicore Multi-tasking operating systems.
- **Real-Time Diagnostics** - Performed on all data inputs, providing audio alarms as immediate feedback if data is not being transmitted, is out of range, or fails other quality criteria.
- **Multi-port Serial or TCP/IP Asynchronous Data Logging** - With GPS position for G-880 and G-882 Marine Magnetometer or Gradiometer Systems.
- **Survey Configuration Wizard** - For automatic setup of survey operations.
- **Flexible Representation of Data** - Split-screen display allows for easy steering for vehicle pilot with Mini-window displays.
- **Constant Updates** - Feature automatically checks Geometrics FTP site for newer releases of the program each time the program is opened.
- **Complete Turnkey Systems** - Are offered by Geometrics including Cesium Vapor or Proton Precession sensors, tow cables, winches, GPS positioning and steering systems, data acquisition computers and data processing and display software and training.



GEOMETRICS
Simplify your search



Navigation Window for Course Corrections in Real Time

MagLog™ utilizes a 3D highway steering window for navigating along predefined survey routes. Data logging can be automatically terminated once the vehicle reaches the endpoint of the route. Cross track errors are calculated in real-time to relay line deviations so the pilot can actively adjust the heading to return on the line. Users can include an acceptable line offset before an error message appears to inform the pilot to shift back towards the survey route.

Multiple asynchronous data devices are properly time tagged, interpolated, displayed and recorded to a disk. This means that whether you are logging 1 sensor or 20, or if some sensors are logging at 1 Hz and others at 100 Hz, the system will maintain optimal efficiency and data integrity.

Configuration Wizard Makes System Setup and Calibration of Depth and Altitude Easy

MagLogPro™ ADDITIONAL FEATURES

- **EM61 Data Recording** allows for survey data from various instruments to be saved to a single data file for processing.
- **Special Data Transmission Formats Accommodated.** Currently, formats for the RMS AADCII, CM-221 Mini-counter, GPS NMEA 0183, GR-800 and GR-820 Gamma Ray Spectrometers, ORE Trackpoint II and typical heading gyros are implemented as well as TCP/IP Ethernet logging.
- **Log Cable Counter Data** to allow for real-time, variable layback calculations and providing a more accurate estimation of where the magnetometers are behind the boat.

Layback Calculations are Computed Automatically using Magnetometer Array Geometry

Specifications subject to change without notice. MagLog_v1 (0821)