

Right-angle Repeater

- Amplifies and repeats LAN signal.
- Housed in watertight titanium container.
- Typically used between deck cable and tow cable.
- Designed to be mounted on side of winch.

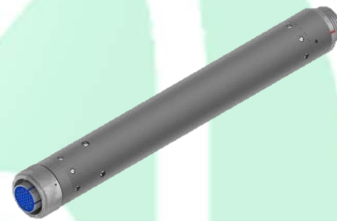
Repeater becomes integral part of the winch, which simplifies deployment/retrieval.



In-line Tension/depth Gauge and Repeater

- Housed in watertight titanium container.
- Reports tension at 1 second intervals via LAN.
- Also acts as LAN repeater.

Allows you to monitor tension and address issues before they become problems. Significantly increased tension can be indicative of problems with a streamer bird, kelp buildup on the tail buoy, etc.






In-line Depth Sensor and Repeater

- Housed in watertight titanium container.
- Reports depth to +/-5 cm for each shot record via LAN.
- Also acts as LAN repeater.

Useful when using short streamer without birds, allows you to monitor streamer depth and make necessary ballasting corrections.



<p><u>Combination In-line Depth and Compass Repeater</u></p> <ul style="list-style-type: none"> • Housed in watertight titanium container. • Reports depth to +/-5 cm for each shot record via LAN. • Reports compass heading to 0.1° for each shot record via LAN. • Also acts as LAN repeater. <p>Allows monitoring of both depth and bearing of streamer.</p>	
<p><u>Tail Compass/Depth Sensor Module</u></p> <ul style="list-style-type: none"> • Housed in watertight titanium container. • Reports depth to +/-5 cm for each shot record via LAN. • Reports compass heading to 0.1° for each shot record via LAN. • Includes tail cap to allow attachment of low-profile drogue. • Available in compass-only or depth only versions. <p>Specially designed for the P-Cable, assists ballasting of short streamers and allows correction for cross current effects. Designed to be fitted with low-profile drogue.</p>	
<p><u>Low-profile Drogue</u></p> <ul style="list-style-type: none"> • Attaches to Tail Compass/Depth Sensor Module at end of streamer. • Provides stabilization and drag for short streamers. <p>Imparts small amount of tension to short streamer in order to keep it straight in the water. Designed specifically for P-Cable system.</p>	

Digitizer and Repeater Floats

- Composed of red cedar
- Designed to make digitizers and repeaters neutrally buoyant.

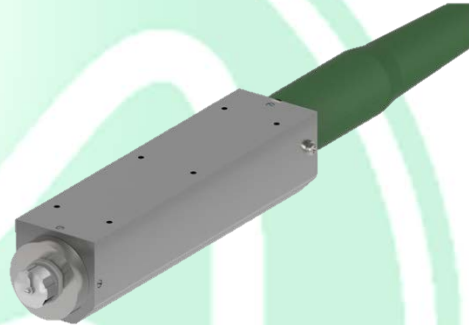
Makes it possible to ballast streamer when not using birds.



Armored Signal Cable

- Designed for use with P-Cable Tri-point.
- Armored with stainless steel mesh

The Signal Cable is the most vulnerable component in the P-Cable system, as it takes the most abuse. Armoring it makes it much more durable and forgiving of deployment mistakes.







Repair Bracket

- Clamps to A/D module.
- For holding streamer in water under tension while changing out components.

Allows change-out of streamer components without pulling entire streamer out of water.



<p><u>Ballasting weights</u></p> <ul style="list-style-type: none"> • Brass, 0.4 Kg each. • Clamps on streamer. • Low profile. <p>Allows easy ballasting of streamer. Made of brass rather than lead, so there are no environmental issues. Can be left on streamer when on winch. Impart no detectable noise to streamer.</p>	
<p><u>Streamer-in-a-box</u></p> <ul style="list-style-type: none"> • Consists of single module housing up to four P-Cable Junction Box components. <p>Allows deployment of small 3D system from very small deck.</p>	
<p><u>Tail Swivel With Power Connection</u></p> <ul style="list-style-type: none"> • Made of Titanium. • Slip ring technology <p>Allows powering tail buoy components (lights, GPS, etc.) through the streamer. No need for battery or generator on tail buoy.</p>	
<p><u>Improved P-Cable Drop Lead</u></p> <ul style="list-style-type: none"> • Fits between Junction Box and A/D module • Similar to stretch section (shown). • Gel-filled. <p>Reduces noise from Cross-Cable</p>	

Improved Cross Cable

- More robust connectors on Junction Box (Birns)
- Includes haired fairing
- More rugged jumper cables and connectors.

Makes Cross Cable much more robust overall, improves up time.



Digitizer Conversion Kits

- Easily convert 2D digitizer to 3D or vice versa.

No need to buy separate digitizer modules for 2D vs. 3D operation.

